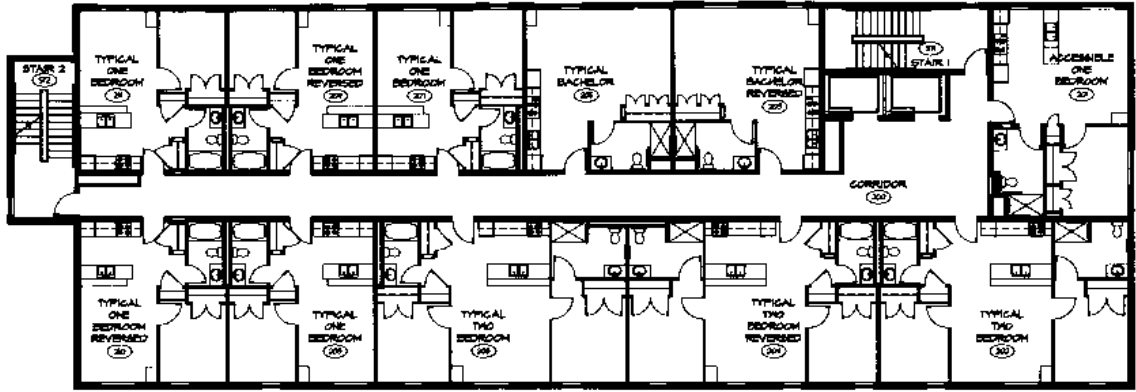
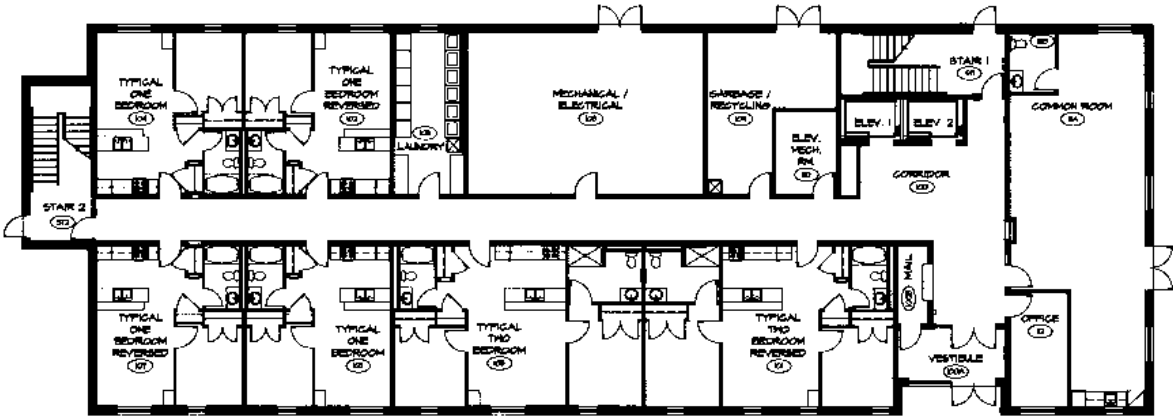


NOTES:
 1. THIS DRAWING AND DESIGN ARE THE PROPERTY OF COLLETT & KEMBEL ARCHITECTS INC. AND SHALL BE REPRODUCED OR DISTRIBUTED IN WHOLE OR IN PART WITHOUT THE EXPRESS WRITTEN CONSENT OF THE ARCHITECT. ISSUED COPIES MUST BE RETURNED TO THE ARCHITECT UPON COMPLETION. CONTRACTORS MUST NOT BE SCALE, VEINY OR OVERLAP ON SITE.



2 SECOND FLOOR PLAN
 SCALE: 1:100
 0m 2 4 6 8m



1 GROUND FLOOR PLAN
 SCALE: 1:100
 0m 2 4 6 8m

NO. BY	REVISION/ISSUES	DATE
COLBOURNE & KEMBEL ARCHITECTS INC. <small>2707 MILL BOSTON PARKWAY PLACE KINGSTON ONTARIO K7M 6W8 TEL: 613 344 2240 FAX: 613 344 0777 WWW.COLBOURNE.COM</small>		
PROJECT: NEW HOUSING DEVELOPMENT FOR F.C.M.H.S. 1 LYONS STREET KINGSTON, ON		
DRAWING: GROUND FLOOR AND SECOND FLOOR PLAN		
DATE: AS SHOWN		
PROFESSIONAL SEAL	DRAWN	DATE
	LP	JAN 2007
	CHECKED	PRINTED
	REVIEWED	ISSUED NO.
	HK	
	PROJECT NO.	
	07008	301

NOT FOR CONSTRUCTION UNLESS SHOWN AND UNDER SCALE